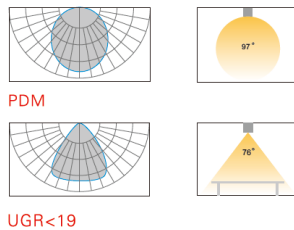
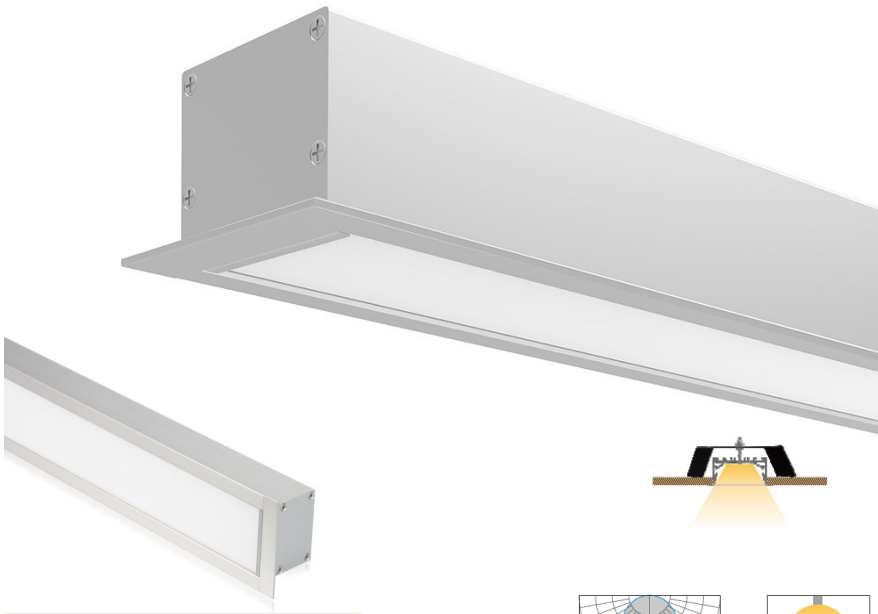


B

APPLICATION

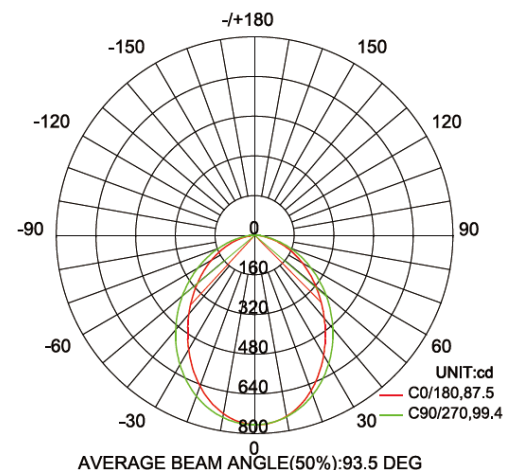
This Lovely Architectural Linear capable of fulfilling designer thoughts with no limits. Suitable for Hotels, Offices , Restaurants. Shopping Malls, Industrial.



PHOTOMETRY

SPECIFICATION FEATURES

| | |
|-------------------|---|
| Design | Aluminum body with Diffused Lens option deliver a controlled low glare UGR <19 and with PDM 93° beam angle. |
| Mounting | Recessed with Trim. |
| LED | Standard 23/35/47 watt, SMD 2835 with 5.8W/ft , 441lm/ft, CRI 80/90. Available In Standard 3000K, 4000K or 6000K CCT. Customize Power & CCT option available. |
| LED Driver | UL Class P Certified Power Supply 0-10 V, PWM and resistor dimming solution Emergency Power Supply and Sensor Options are available. |
| Remarks | Output data is from test result of 4ft PDM Linear fixture. Tolerance +/- 10%. |



TABULATION & ORDERING NUMBER LOGIC

| Model | CCT | Watt | Length | Finish | Optics | Dimming | CCT & CRI |
|-------|------------|----------|---------|------------|---------------------------------|--|--------------------|
| R5536 | WW - 3000K | 23 - 23W | 12 - 4' | W - White | PDM – Planner diffusion mask | SDC - Constant current version 3 in 1 Dimming (0-10V, PWM, Resistance) | 30K8 - 3000K RA 80 |
| | NW - 4000K | 35 - 35W | 18 - 6' | B - Black | UGR – Anti Glare | | 40K8 - 4000K RA 80 |
| | W - 6000K | 47 - 47W | 25 - 8' | S - Silver | | | 60K8 - 6000K RA 80 |
| | Note * | Note ** | | | | | 30K9 - 3000K RA 90 |
| | | | | | | | 40K9 - 4000K RA 90 |
| | | | | | | | 60K9 - 6000K RA 90 |
| | | | | | | | |

Note*: Above are the standard CCT, Other CCT are available as per Project requirement.

Note:** Above are the standard Watts, Power/ Lumen Package can be customize as per Project requirement

ORDERING EXAMPLE: R5536-WW-23-12-W-PDM-SDC-0K8-A-L-SM

Quick Model Reference:

4' : R5536-a23

6' : R5536-a35

8' : R5536-a47

| Voltage | Accessories |
|-------------------|--|
| A - 100 - 277 VAC | R-5536-BI - N Shape Clip. L-PTB-NF - pendant wire + canopy with cable hole. |

